



Microlite Travel Trailers



*A gracefully sculpted masterpiece...
Michelangelo would be pleased.*



Excitement at every curve.



One look at T@DA and you will understand why so many people are falling in love again with RVing. T@DA – the retro design of yesterday meets today's technology.

With a base weight of less than 2200 pounds, T@DA is lightweight, easy to tow and even easier to set-up and use. Plus, T@DA's innovative floorplan maximizes sleeping, living and storage space. It includes a fully functional kitchen with a refrigerator, microwave, stove top and sink. It even includes a bathroom and is available with a shower!

But it's not just T@DA's unique shape and terrific interiors that people love; it's also the technology that makes it one of the best values in the industry.

T@DA features an ultra-lite body design and an ultra-lite weight chassis. The body is fully laminated with *Alufiber*®, the industry's newest material. Its high-gloss finish is designed for years of durable use. Plus, T@DA includes double-pane, shatter-resistant windows, four corner stabilizer jacks and a front egress window.

So, are you ready to express yourself with T@DA? Just personalize your T@DA by picking your favorite body color, trim color and decal package.

T@DA - it's excitement at every curve.



Kitchen with sink/stove combination, 12 V refrigerator & optional microwave



Bathroom with optional shower



Queen bed and dinette

Optional Features



TV / DVD Combo

Sit back and watch your favorite movies on the optional 15" flat screen TV with integrated DVD player, and a remote control is included for your convenience. You just bring the popcorn!



Air Conditioner with Heat Pump

The optional 12,000 BTU *Cool Cat* air conditioning system will keep you comfortable on those too-warm days.

The AC is also equipped with a heat pump to warm you up when the campfire just won't cut it. A 12,000 BTU furnace is also available.



Hydro Package

T@DA includes a standard 5 gallon cassette toilet. The portable cassette toilet tank stores in an exterior compartment for easy storage and removal (standard feature, shown above right).

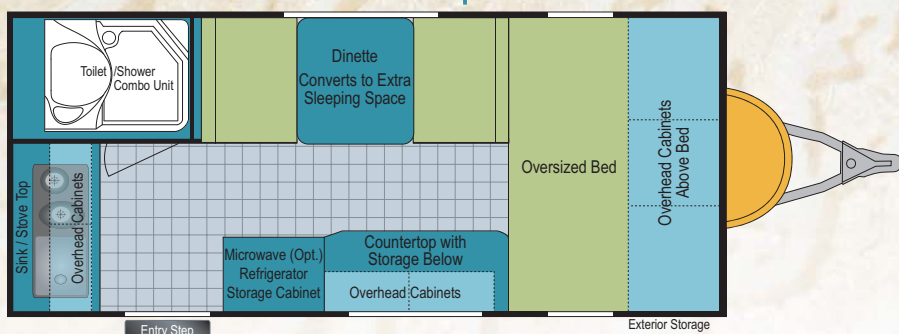
The optional Hydro Package includes a 6 gallon water heater, shower-head with water-saver feature, shower curtain and a hot & cold sink faucet for the galley sink. The bath is prepped for a 22 gallon tote-along portable tank, available through your local dealer (shown above left).



Screen Door

T@DA is available with a slider screen door. You will love how easily this screen door works! Let the air in and keep the bugs out!

T@DA Floorplan



Weights & Lengths

| Axle Weight | Unloaded Vehicle Weight | GVWR | Net Cargo Capacity | Hitch Weight | Exterior Length | Exterior Width | Exterior Height | Interior Height |
|-------------|-------------------------|------|--------------------|--------------|-----------------|----------------|-----------------|-----------------|
| 1977 | 2121 | 3300 | 1179 | 144 | 18'5" | 6'7" | 7'11" | 5'9" |

Vehicle loading - Every effort has been made to provide the greatest number of options for the recreational vehicle owner. Along with these choices comes the responsibility to manage the loads that are imposed by the choices that they remain within the manufacturer's specified chassis weight limits. Do not overload the recreational vehicle. Some optional equipment not included. Net carrying capacity (NCC) is determined by subtracting unloaded vehicle weight (UVW) from gross vehicle weight (GVWR) and includes fluids, options and cargo. Liquid capacities and weights are approximations only. **Warning** - This information is intended as a guide only. Weights of individual vehicles may vary. Consult your owner's manual for complete loading, weighing and towing instructions. *UVW and Hitch Dry Weight are base weights of units without options. Each unit includes a weight label which lists specific weight information for that unit.

Sizes & Capacities

| Fresh Water Tank Standard (gal.) | Grey Water Tank (gal.) | Black Water Tank (gal.) | LP Capacity | Water Heater Opt. | LP Furnace Opt. | Tire Size |
|----------------------------------|-----------------------------|-------------------------|-------------|-------------------|-----------------|-------------|
| 22 | Prepped for tote-along tank | 5 Gal. cassette | (1) 20 lb. | 6 Gal. | 12,000 BTU | ST205/75R14 |

Visit www.Tada-rv.com for more photos, specifications and information!

Shown below and on cover with optional Fireball decal package.



Flex your creative muscles. Mix and match - the possibilities are endless!

Exterior Trim Colors



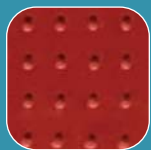
White



Lime Green



Jolt Grey



Cherry Red



Mellow Yellow



Orange Krush

Exterior Alufiber® Body Colors



Aqua



Red



Yellow



White
(Standard)



Silver

Interior Fabric Choices



Aztec Gold



Bamboo



Block Party



Firefly Red



Moondust

Standard & Optional Features

Standard Exterior Features

White Alufiber exterior skin color
Your choice of exterior trim colors
Fully laminated body with block foam insulation
Entry step
14" low radial tires
Aluminum rims
Powder-coated European-style lightweight frame
Rubber torsion, independent suspension axle
Tongue jack
7-way plug
5,000# safety chains
Four corner stabilizer jacks
Front egress window
Four grab handles

Exterior patio light
Exterior 110V receptacle
20 Pound LP bottle
ABS bottle cover
20 ft. 30 Amp detachable power cord
22 Gallon fresh water tank
City water hook-up

Standard Interior Features

Your choice of interior colors
Oversized bed
Norcold 12V compressor refrigerator
Hardwood framed cabinet doors
Poly Plastic, duo-pane windows
Roll-away window screens & night shades
Roof vent
Premium vinyl flooring
Booth dinette converts to extra sleeping space

12V water pump
12V light fixtures
SMEV Sink & LP stove top combination
55 Amp power converter

Standard Bathroom Features

Wet bath with integrated toilet
5 Gallon cassette tank for toilet (external access)
ABS-lined walls and ceiling
ABS-molded floor with drain
Prepped for optional shower includes:
Plumbing for a 22 gallon tote-along portable sewer tank (not included)
Recommended portable tank - Barker #11104 - Available through dealer

Optional Features

Your choice of Alufiber exterior skin colors
Your choice of decal packages

12,000 BTU LP furnace
Cool Cat air conditioner with heat pump
Northern Breeze power roof vent
Spare tire
AM/FM/CD stereo with two speakers
Screen room with storage bag
15" Flat screen TV/DVD combo with remote control
Microwave
Second 12V refrigerator
Roll-away screen door
Bike Rack

Optional Hydro Package

6 Gallon gas/electric DSI water heater
Hot & cold water sink faucet
Showerhead with water-saver feature
Shower curtain

Exterior Decal Packages

- Your Choice of Alufiber Body Color
- Your Choice of Trim Color



Jolt Grey Trim - Silver Body



Fireball T@DA

Recommended Trim: Cherry Red, Jolt Grey



White Trim - Aqua Body



Sail T@DA

Recommended Trim: Mellow Yellow, Orange Krush, Jolt Grey



White Trim - Red Body



Wave T@DA

Recommended Trim: Jolt Grey, White

www.tada-rv.com

Dutchmen Manufacturing, Inc.
A division of Thor Industries, Inc.
2164 Caragana Court ■ Goshen, IN 46526
Sales: 574.534.1224 ■ Fax: 574.975.0593

Your local dealer